



# Recombinant Antigens Expressed in *Pichia pastoris* for the Diagnosis of Sleeping Sickness Caused by *Trypanosoma brucei gambiense*

Stijn Rogé<sup>1,2\*</sup>, Liesbeth Van Nieuwenhove<sup>1</sup>, Magali Meul<sup>1</sup>, Annick Heykers<sup>1</sup>, Annette Brouwer de Koning<sup>1</sup>, Nicolas Bebronne<sup>1</sup>, Yves Guisez<sup>2</sup>, Philippe Büscher<sup>1</sup>

**1** Department of Biomedical Sciences, Unit of Parasite Diagnostics, Institute of Tropical Medicine, Antwerp, Belgium, **2** Laboratory for Molecular Plant Physiology and Biotechnology, Department of Biology, University of Antwerp, Antwerp, Belgium

## Abstract

**Background:** Screening tests for *gambiense* sleeping sickness, such as the CATT/*T. b. gambiense* and a recently developed lateral flow tests, are hitherto based on native variant surface glycoproteins (VSGs), namely LiTat 1.3 and LiTat 1.5, purified from highly virulent trypanosome strains grown in rodents.

**Methodology/Principal Findings:** We have expressed SUMO (small ubiquitin-like modifier) fusion proteins of the immunogenic N-terminal part of these antigens in the yeast *Pichia pastoris*. The secreted recombinant proteins were affinity purified with yields up to 10 mg per liter cell culture.

**Conclusions/Significance:** The diagnostic potential of each separate antigen and a mixture of both antigens was confirmed in ELISA on sera from 88 HAT patients and 74 endemic non-HAT controls. Replacement of native antigens in the screening tests for sleeping sickness by recombinant proteins will eliminate both the infection risk for the laboratory staff during antigen production and the need for laboratory animals. Upscaling production of recombinant antigens, e.g. in biofermentors, is straightforward thus leading to improved standardisation of antigen production and reduced production costs, which on their turn will increase the availability and affordability of the diagnostic tests needed for the elimination of *gambiense* HAT.

**Citation:** Rogé S, Van Nieuwenhove L, Meul M, Heykers A, Brouwer de Koning A, et al. (2014) Recombinant Antigens Expressed in *Pichia pastoris* for the Diagnosis of Sleeping Sickness Caused by *Trypanosoma brucei gambiense*. PLoS Negl Trop Dis 8(7): e3006. doi:10.1371/journal.pntd.0003006

**Editor:** Alain Debrabant, US Food and Drug Administration, United States of America

**Received:** April 14, 2014; **Accepted:** June 3, 2014; **Published:** July 17, 2014

**Copyright:** © 2014 Rogé et al. This is an open-access article distributed under the terms of the Creative Commons Attribution License, which permits unrestricted use, distribution, and reproduction in any medium, provided the original author and source are credited.

**Data Availability:** The authors confirm that all data underlying the findings are fully available without restriction. All relevant data are within the paper and its Supporting Information files.

**Funding:** This work was financially supported by the Research Foundation Flanders (FWO; www.fwo.be; Krediet aan Navorsers (1516907N)), the Belgian Directorate General for Development Cooperation and the Secondary Research Funding of the Institute of Tropical Medicine (SOFI-B), the Institute of Tropical Medicine (www.itg.be; RATT-project) and by the European Commission under the Health Cooperation Work Programme of the 7th Framework Programme (NIDIAG Collaborative Project; grant agreement 260260; www.nidiag.org). The funders had no role in study design, data collection and analysis, decision to publish, or preparation of the manuscript.

**Competing Interests:** The authors have declared that no competing interests exist.

\* Email: sroge@itg.be

## Introduction

African trypanosomiasis are neglected tropical diseases that perpetuate poverty through their burden on both public health and agriculture [1]. Human African trypanosomiasis (HAT) or sleeping sickness occurs in remote sub-Saharan areas and is caused by two human infective subspecies of the protozoan parasite *Trypanosoma brucei* (*T.b.*). *T.b. gambiense* is endemic in West and Central Africa, where it causes a chronic form of sleeping sickness. It is primarily considered as a human infection, but infections of domestic and wild animals might also be observed [2,3]. The other human infective subspecies, *T.b. rhodesiense*, endemic in Eastern and Southern African countries, causes an acute form of sleeping sickness. It is a zoonosis with non-human vertebrates as primary reservoir [4–7]. The trypanosomes are transmitted by the bite of an infected tsetse fly (*Glossina* spp.) [8,9]. Sleeping sickness can be cured, but early diagnosis is important since treatment of second

stage patients is more complicated and the risk of severe side effects increases significantly [8].

In 2001, efforts to eliminate HAT were intensified. Since then the number of reported cases declined by more than 70% with 7214 new cases reported to the World Health Organisation (WHO) in 2012. Infected patients were only detected in 13 of the 24 historical *T.b. gambiense* endemic countries, with the vast majority (84%) in the Democratic Republic of the Congo. *T.b. rhodesiense* infections accounted for only 2% or 110 new cases in 6 countries; 65% of them in Uganda. The WHO envisages the elimination of *gambiense* HAT by 2030 through active and passive case detection combined with vector control [10].

The HAT control programs in *T.b. gambiense* endemic areas aim at parasite elimination from the human reservoir by means of mass screening, diagnosis and treatment of affected individuals. Accurate diagnosis of sleeping sickness not only prevents incorrect or delayed medical intervention possibly resulting in death of the

## Author Summary

Population screening for the chronic form of sleeping sickness or *gambiense* human African trypanosomiasis (HAT) is still based on an antibody detection test against the native variant surface glycoprotein (VSG) LiTat 1.3. This protein is produced through massive infections of lab animals with highly virulent parasites. We aim to replace this native antigen with recombinant VSGs, both LiTat 1.3 and LiTat 1.5, expressed in the yeast *Pichia pastoris*. The diagnostic potential of these recombinants was confirmed in ELISA with sera from HAT patients and negative controls. Replacement of the native LiTat 1.3 VSG with these recombinants would prevent the infection and sacrifice of lab animals and the inherent infection risk linked to the production of the screening test. Upscaling production of recombinant antigens, e.g. in biofermentors, is straightforward thus leading to improved standardisation of antigen production and reduced production costs, which on their turn will increase the availability and affordability of the diagnostic tests needed for the elimination of *gambiense* HAT.

patient, but also limits disease transmission in the community through a decrease of the human reservoir [11–14]. The diagnosis of *gambiense* sleeping sickness consists of three interrelated steps: screening, parasitological confirmation and staging [12,15]. Currently the Card Agglutination Test for Trypanosomiasis (CATT), an antibody detection test, is used for mass population screening. Even though antibody detection techniques only provide indirect evidence for the presence of trypanosome infections, they are a valuable tool for mass screening because of the limited sensitivity of the parasitological tests [12,16]. These parasitological tests are performed on lymph or blood and consist of microscopical parasite detection. The most sensitive diagnostic field test available is the mini-anion exchange centrifugation technique (mAECT); even more so when the trypanosomes are concentrated in the buffy coat [17,18]. Staging of sleeping sickness is performed through microscopical examination of the cerebrospinal fluid for elevated white blood cells (more than 5 per  $\mu\text{l}$ ) or for the presence of trypanosomes.

For diseases with often low parasitaemias, such as *gambiense* sleeping sickness, screening for the presence of specific antibodies elicited upon contact with the parasite, offers a valuable detection tool. The better screening tests for *gambiense* sleeping sickness are all based on variant surface glycoproteins (VSGs). One type of VSG covers the complete surface of the trypanosome, including the flagellum, by forming a dense layer of dimers. This VSG coat is highly immunogenic. The parasite can however avoid complete elimination by the host humoral immune system by regularly replacing the VSG coat by another one of a different antigenic type, a mechanism called antigenic variation [19,20]. The CATT screening test for *T.b. gambiense* uses the LiTat 1.3 VSG as antigen [21]. This VSG is expressed early in most *gambiense* infections; therefore specific anti-LiTat 1.3 VSG antibodies serve as a potent diagnostic marker. To increase the sensitivity of the antibody detection test other predominant VSGs, LiTat 1.5 and LiTat 1.6, can be added. A rapid latex agglutination test, LATEX/*T.b. gambiense*, combining these three VSGs has been developed [22] and the ELISA/*T.b. gambiense* with the same antigen combination has a proven high sensitivity and specificity on serum, plasma, CSF and even saliva [23,24]. However, stability and/or logistical requirement issues prevented replacement of the CATT by these tests. Recently, rapid lateral flow diagnostic tests for *gambiense* HAT

have been developed which use a combination of native LiTat 1.3 and LiTat 1.5 VSGs as antigens [25–27]. Compared to the CATT, these tests are as sensitive and specific and fully comply with the ASSURED criteria defined for rapid diagnostic tests [28]. However, the native antigens for these tests are still produced through massive infections of laboratory rodents with highly human-infective bloodstream form trypanosomes expressing these variant antigenic types (VATs). We therefore aim to replace these native antigens by recombinant antigens in order to eliminate the infection risk for staff and the need for laboratory animals for antigen production. We opted for secreted expression of the expressed VSG fragments to avoid the difficult and tedious purification of intracellular, recombinant proteins. Since eukaryotic post-translational modifications, such as the glycosylation pattern of a protein, can be important for the correct folding of the protein and hence its diagnostic value, we expressed the antigens recombinantly in the yeast *Pichia pastoris*. We have previously used the same expression host to successfully express the *T. evansi* VSG RoTat 1.2 [29]. The expressed and secreted recombinant proteins were affinity purified and tested for their diagnostic potential with a panel of sera from HAT patients and non-HAT controls.

## Materials and Methods

### Ethics statement

Sera from HAT patients and endemic non-HAT controls were collected within different diagnostic studies [24,30]. All individuals gave their written informed consent for the use of their plasma specimen in HAT research before providing blood. Permission for these studies was obtained from the national ethical committee of the Democratic Republic of the Congo (DR Congo) and from the Institute of Tropical Medicine Antwerp (ITMA) ethical committee, reference number 03 07 1 413 and 04 44 1 472. All specimens were anonymised.

### Yeast strain

For recombinant expression of the trypanosome proteins, the *Pichia* GlycoSwitch M5 strain was used to assure homogeneous, trypanosome-like  $\text{Man}_5\text{GlcNAc}_2$  N-glycosylation of the secreted proteins [31].

### Expression vectors

The recombinants were cloned in the pP- $\alpha$ hSUMO3 vector of the SUMOpro-3 Gene Fusion Technology kit (LifeSensors) and electroporated in the *Pichia* GlycoSwitch M5 strain. This vector contains the strong, methanol-inducible AOX1 promoter followed by an alpha-mating factor signal sequence for secreted expression of the recombinants [32] and a N-terminal His tag for downstream affinity purification. The affinity tag is linked to the human SUMO3 (small ubiquitin-like modifier) which precedes the cloned protein-of-interest in order to enhance the expression and to promote the solubility and correct folding of its fusion partner.

The cloned constructs in the pP- $\alpha$ hSUMOpro3 vector result in SUMO fusion proteins. The rLiTat 1.3 consists of a N-terminal His tag, followed by the SUMO fusion protein, the 349 N-t amino acids of LiTat 1.3 VSG and a C-t Strep tag II. The rLiTat 1.5 has a similar setup, with 394 N-t amino acids of the LiTat 1.5 VSG.

### Preparation of cDNA from purified trypanosomes of *T.b. gambiense* LiTat 1.5

The trypanosomes expressing the LiTat 1.5 VSG were obtained from the collection of trypanosome stabulates maintained at the Institute of Tropical Medicine in Antwerp. Cryostabulates were injected in OF-1 mice. At the first peak parasitaemia, the mice

were euthanised and bled by cardiac puncture. The trypanosomes were purified from the blood through ion exchange chromatography on DEAE cellulose according to Lanham & Godfrey [33]. The purified trypanosomes were centrifuged (15 min, 1500 g) and washed twice with 14 ml of phosphate buffered saline-glucose, pH 8.0, and then pelleted by centrifugation. The pellet was either used immediately or stored at  $-80^{\circ}\text{C}$  for later use. Total RNA was extracted from the pellets with the RNeasy Midi Kit (Qiagen). Finally, the RNA was reverse transcribed with an oligo-dT primer to cDNA following the Omniscript RT Kit protocol (Qiagen).

**Construct engineering**

The variable N-terminal parts of LiTat 1.3 and of LiTat 1.5 VSG were cloned in the expression host since they contain the specific immunogenic epitopes of the VSGs which are exposed to the host immune system. The N-terminal part of the LiTat 1.3 sequence (GenBank accession no. **KJ499460**) was PCR-amplified from *T.b. gambiense* LiTat 1.3 genomic DNA (gDNA) with a primer set starting at the first residue of the mature polypeptide (amino acid 24) and ending at amino acid 372 of a total of 479 amino acids. A *BsaI* site was incorporated in the forward primer (LiTat 1.3\_SUMO-FP) and a Strep tag II coding sequence (IBA), a stop codon and a *BsaI/XbaI* site were added to the reverse primer (LiTat 1.3\_SUMO-RP). The N-terminal domain of the LiTat 1.5 VSG sequence was amplified from *T.b. gambiense* LiTat 1.5 cDNA (GenBank accession no. **HQ662603**). These primers were developed according to the instructions of the cloning strategy (In-Fusion HD Cloning Kit, Clontech Laboratories). The complete LiTat 1.5 VSG sequence covers 502 amino acids, but the amplified sequence starts at the first residue of the mature polypeptide (amino acid 33) and ends at amino acid 426 [34]. All primers used are shown in table 1.

The PCR fragments were cloned in the pP- $\alpha$ hSUMO3 vector, previously digested with *BsmBI*. The resulting constructs were transformed into TOP10 *E. coli* cells (Invitrogen) and plated on LB<sub>LS-z</sub> (low salt Lysogeny Broth medium with 25  $\mu\text{g/ml}$  zeocin (InvivoGen)) agar plates. Positive clones were selected by colony PCR with  $\alpha$ -factor and 3'AOX1 primers and grown overnight in 5 ml LB<sub>LS-z</sub> medium in a shaker incubator at  $37^{\circ}\text{C}$  and 250 rpm (Innova 44R, New Brunswick Scientific). The plasmid DNA was purified (QIAprep Spin Miniprep Kit, Qiagen) and the nucleotide sequences of the truncated genes in the transfer plasmid were confirmed by sequencing.

For the LiTat 1.3 construct a secreted rLiTat 1.3<sub>H-SUMO-24-372-Strep</sub> (rLiTat 1.3) protein of 457 amino acids with a calculated mass of 49 kDa is expected, while the LiTat 1.5 construct codes for rLiTat 1.5<sub>H-SUMO-33-426-Strep</sub> (rLiTat 1.5) consisting of 502 amino acids with a theoretical mass of 55 kDa (ExPASy ProtParam tool).

**Transfection into *Pichia pastoris***

The constructs were linearised with *PmeI* and purified (QIAquick, QIAGEN). The concentration was measured with the NanoDrop ND-1000 Spectrophotometer (ISOGEN Life Science) and 1 to 3  $\mu\text{g}$  linearised plasmid DNA in a maximum volume of 10  $\mu\text{l}$  were electroporated (25  $\mu\text{F}$ , 2000 V; Gene Pulser XCell, Bio-Rad) into 80  $\mu\text{l}$  electrocompetent *Pichia* GlycoSwitch M5 cells. The transfected clones were selected on YPDS<sub>z</sub> (yeast extract peptone dextrose sorbitol medium with zeocin) agar plates with zeocin concentrations ranging from 100 to 2000  $\mu\text{g/ml}$  to select for putative multicopy transfectants.

**Screening for expression of recombinant LiTat 1.3 and 1.5**

Positive transfectants were selected by inoculation of individual colonies in 10 ml Buffered Glycerol-complex Medium (BMGY) in 50 ml falcon tubes. After 24 h growth ( $29^{\circ}\text{C}$ , 250 rpm; Innova 44R, New Brunswick Scientific), the cells were collected by centrifugation for 5 min at 3220 g. The supernatant was discarded and the cells were resuspended in 10 ml Buffered Methanol-complex medium (BMMY).

The secreted expression of the recombinants was induced for 24 h at 250 rpm and, to minimise protein degradation, at  $22^{\circ}\text{C}$ . The supernatant was collected by centrifugation of the cell culture for 15 min at 3220 g. The proteins in 1 ml supernatant were precipitated with trichloroacetic acid (TCA) and resuspended in 25  $\mu\text{l}$  of 1 M Tris-base and 25  $\mu\text{l}$  of SDS-PAGE reducing loading buffer (0.125 M Tris-HCl (pH 6.8), 4% SDS, 20% sucrose, 0.04% bromophenol blue, 0.2 M dithiothreitol). The secreted proteins were separated over a 12% polyacrylamide gel (50 min at 200 V; Mini-PROTEAN Tetra Cell Electrophoresis System, Bio-Rad) and transferred to a nitrocellulose membrane by western blotting (30 min at 100 V; Criterion Blotter, Bio-Rad). The nitrocellulose membrane was blocked overnight with TBS-Blotto (0.02 M Tris-HCl (pH 7.5), 0.5 M NaCl, 0.004%  $\text{NaN}_3$ , 5% skimmed milk powder (Fluka)) The proteins were visualised by immunostaining either indirectly with mouse anti-His tag antibody (1:500; AbD Serotec) as primary antibodies followed by alkaline phosphatase

**Table 1.** PCR primers developed for the recombinant expression of LiTat 1.3 and LiTat 1.5 constructs with incorporation of a C-terminal Strep tag II.

LiTat 1.3_SUMO-FP	ATA	GGTCTCAAGGT	GCTGTCAATGGCAATGTC	
	Red	<i>BsaI</i>	LiTat 1.3 VSG <b>AJ304413</b> (AA 24)	
LiTat 1.3_SUMO-RP	ATT	GGTCTCTCTAGA	TTA	CTTTTCAAATTGTGGATGAGACCA
	Red	<i>BsaI/XbaI</i>	Stop	Strep tag II
				LiTat 1.3 VSG <b>AJ304413</b> (AA 372)
LiTat 1.5_SUMO_IF-FP	CAGCAGACGGGAGGT		GCG GCC ATA ACC GAT	
	pP- $\alpha$ SUMOpro3 vector		LiTat 1.5 VSG <b>HQ662603</b> (AA 33)	
LiTat 1.5_SUMO_IF-RP	CCGCGCCGCTCTAGT		TTA	CTTTTCAAATTGTGGATGAGACCA
	pP- $\alpha$ SUMOpro3 vector		Stop	Strep tag II
				LiTat 1.5 VSG <b>HQ662603</b> (AA 426)

Red: redundant nucleotides, FP: forward primer, RP: reverse primer, IF: In-Fusion.  
doi:10.1371/journal.pntd.0003006.t001

conjugated rabbit anti-mouse IgG (1:15000; Sigma) or directly with Strep-Tactin AP conjugate (1:4000; IBA), followed by the addition of the substrates nitro blue tetrazolium (NBT) and 5-bromo-4-chloro-3-indolyl phosphate (BCIP).

### Bulk protein expression and purification

The selected protein secreting colonies were inoculated in 500 ml BMGY with addition of 0.2 g/l chloramphenicol. The cultures were grown in Fernbach shake flasks for 24 to 66 hours at 29°C and 200 rpm to create sufficient biomass. Afterwards, the cells were collected by centrifugation (5 min at 4417 g) and resuspended in an equal volume of BMMY\_2%CA (BMMY supplemented with 2% casamino acids (BD)) containing 1% methanol and with addition of 1% J673A antifoam (Struktol) [35]. After measurement of the optical density at 600 nm the culture was further diluted with BMMY\_2%CA to an OD<sub>600 nm</sub> of 5.0 and 500 ml of this dilution was transferred to a Fernbach flask. Protein expression was induced for 2 days at 22°C and 200 rpm with addition of 0.5% methanol every 8 h. The supernatant was collected by centrifugation for 30 min at 17670 g (without brake).

The rLiTat 1.3 and 1.5 constructs were purified over a nickel charged nitrilotriacetic acid agarose resin (Ni-beads; HisPur Ni-NTA resin; Pierce). The collected culture supernatant was added to the Ni-beads (50 ml per 1 ml beads in a 50 ml falcon) and mixed for 1 h on a roller mixer at room temperature. After 1 h the beads were collected by 5 min centrifugation at 700 g. A sample of the supernatant (flow-through) was taken to evaluate the binding efficiency. The beads were resuspended in 1 ml of wash buffer (20 mM sodium phosphate, 300 mM sodium chloride (PBS) with 25 mM imidazole, pH 7.4) and decanted into a 20 ml Econo-column (Bio-Rad) in a cold room at 4°C. All further purification steps were performed in this cold room. After packing of the column, the unbound proteins were washed away with wash buffer until the baseline absorption value at 280 nm (i.e. the absorption value of the wash buffer), measured with an UV spectrophotometer (Spectra/Chrom Model 280 UV Detector, Spectrum Chromatography), was reached. The bound proteins were eluted with elution buffer (PBS with 250 mM imidazole, pH 7.4).

### Protein concentration

The purified proteins were desalted over a HiPrep 26/10 Desalting column (GE Healthcare) with PBS at 4°C according to the manufacturer's instructions. The concentration was measured by the BCA Protein Assay Kit (Thermo Scientific).

### Reactivity of the purified proteins in ELISA with human sera

Microplates (Maxisorp, Nunc) were coated overnight at 4°C with 100 µl/well of purified rLiTat 1.3 or rLiTat 1.5 at 4 µg/ml or a combination of both recombinants at 4+4 µg/ml and with 100 µl/well of native LiTat 1.3 or 1.5 at 2 µg/ml or a combination of both native antigens at 2+2 µg/ml. All antigens were diluted in PB (10 mM sodium phosphate, pH 6.5). Antigen-negative control wells were left empty. Further manipulations were done at ambient temperature. The protocol was based on the procedure according to Lejon *et al.* [36,37]. To correct for aspecific reactions, caused by contaminating yeast proteins that were not eliminated from the protein mixture by the one-step affinity purification, a culture of untransfected *Pichia pastoris* M5 strain was grown for 47 h in BMMY\_2%CA (after a pre-culture in BMGY). This culture was induced with methanol in exactly the same way as the transfected strains (i.e. addition of 0.5% methanol every 8 h). Before addition to the microplate the sera were desorbed by

dilution in PBS-Blotto (0.01 M sodium phosphate, 0.2 M sodium chloride, 0.05% NaN<sub>3</sub>, 1% skimmed milk powder, pH 7.4) supplemented with 10% (v/v) untransfected M5 medium for 1 h at room temperature. The serum dilutions were centrifuged for 5 min at 3000 g before pipetting. One hundred and sixty two human sera from 88 *T.b. gambiense* HAT patients and 74 non-HAT controls, were tested at a 1:400 dilution. Antibody binding was visualised with goat anti-human IgG (H+L) conjugated with horseradish peroxidase (1:40000; Jackson ImmunoResearch) and the chromogen ABTS (2,2'-azinobis[3-ethylbenzothiazoline-6-sulfonic acid]-diammonium salt; Roche). The optical densities were read at 414 nm (Multiskan RC Version 6.0; Labsystems).

The optical density (OD) measured for each serum was recalculated as percent positivity (PP) of the OD of the strong positive control present on each plate. The same strong positive control and a weak positive control were incorporated in each plate to monitor plate to plate variations on a Levey-Jennings chart [38]. On this chart the Westgard rules were applied to accept or reject each individual plate and to repeat the ELISA if necessary [39].

### Statistical analysis

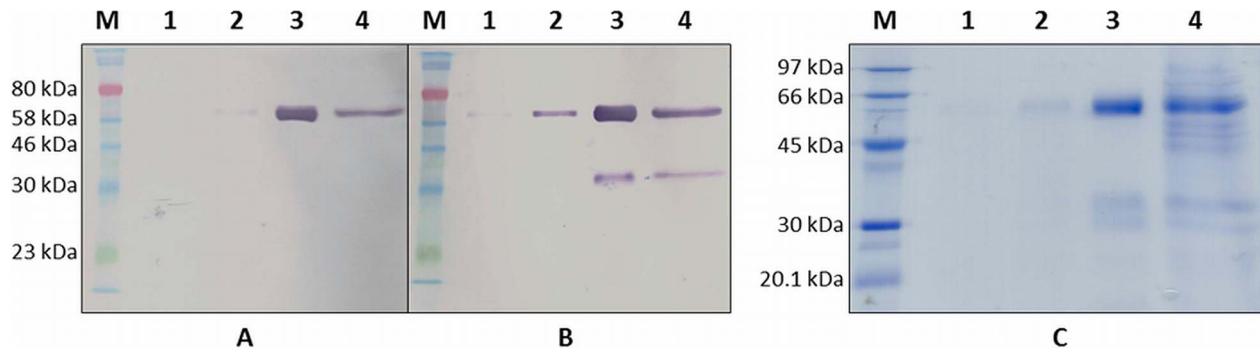
The accuracy of the different antigens for diagnosis was determined in SigmaPlot 12.0 by calculation of the area under the receiver operator characteristics (ROC) curve (AUC) [40]. Confidence intervals (CI) were determined according to DeLong [41]. Sensitivities and specificities with 95% binomial Wilson confidence intervals were calculated using SigmaPlot 12.0. The McNemar Chi<sup>2</sup> test was used to test differences in sensitivity and specificity of the recombinant and native antigens and their mixtures and differences in AUCs.

## Results

### Expression and purification of rLiTat 1.3 and rLiTat 1.5

After two days of induction, the secreted recombinants were affinity purified from the harvested supernatants and analysed by SDS-PAGE followed by western blot and Coomassie staining. The rLiTat 1.3 is detected in western blot with anti-His tag and anti-Strep tag II antibodies (Fig. 1, panel A and B). The anti-His tag antibody recognises a protein of approximately 60 kDa in the affinity purified fraction and in the 20× concentrated fraction that was not retained by the Ni-NTA resin. The anti-Strep tag antibody recognises the same 60 kDa protein in the supernatant of the *Pichia* culture after 44 h induction but also visualises a shorter, putative degradation product of approximately 35 kDa in the affinity purified fraction and the concentrated flow-through. Three bands are visible in the purified fraction in the Coomassie stained gel (Fig. 1, panel C). The most prominent band corresponds with the His- and Strep-tagged recombinant protein of 60 kDa. One of the two smaller bands of 30–35 kDa corresponds with the Strep-tagged degradation product of the recombinant protein. The apparent mass of 60 kDa of the rLiTat 1.3 does not match its expected theoretical mass of 49 kDa. However, the difference can be attributed to the SUMO fusion protein, since it is known that while this chaperone has a theoretical mass of less than 11 kDa, it migrates at approximately 20 kDa (Christian Loch, LifeSensors, personal communication). Not all secreted recombinant fractions were retained by the Ni-NTA resin since they are visible in the 20× concentrated flow-through of the Ni-NTA resin.

The secreted rLiTat 1.5 also reacts with anti-His tag and anti-Strep tag II antibodies (Fig. 2, panel A and B). Only in the affinity purified fraction, the anti-His tag antibody recognises proteins of approximately 80 kDa (faint band) and 35 kDa. The anti-Strep



**Figure 1. Expression of rLiTat 1.3<sub>H-SUMO-24-372-Strep</sub> by *Pichia pastoris*.** A: Western blot with anti-His tag antibody; B: Western blot with anti-Strep tag antibody; C: Coomassie stained 12% SDS-PAGE gel; Protein markers (M): ColorPlus Prestained Protein Marker (NEB; A and B) and LMW-SDS protein marker (GE Healthcare; C); lane 1: supernatant of transfected *Pichia pastoris* M5 after 25 h induction; lane 2: supernatant of transfected *Pichia pastoris* M5 after 44 h induction; lane 3: Ni-NTA purified recombinant LiTat 1.3; lane 4: 20× concentrated flow-through of Ni-NTA purified supernatant.  
doi:10.1371/journal.pntd.0003006.g001

tag antibody reacts already after 25 h induction with a 80 kDa protein in the supernatant of the *Pichia* culture and in the affinity purified fraction. In the latter fraction several putative degradation products of about 20, 25, 35, 40 and 70 kDa also react with this anti-Strep tag antibody. The apparent mass of the secreted recombinant is again higher than expected (80 kDa vs. 55 kDa). Moreover, this difference cannot be explained by the presence of the SUMO fusion partner alone. Nevertheless, we have previously observed that other recombinantly expressed trypanosome glycoproteins tend to migrate slower, probably due to interference of the oligosaccharides with the binding of SDS on the protein backbone [29,42]. Most secreted recombinant fractions were retained by the Ni-NTA resin since they are not or hardly visible in the 20× concentrated flow-through of the Ni-NTA resin (Fig. 2, panel C).

Affinity purification of 100 ml yeast culture after two days of induction yielded typically 1 mg of recombinant proteins.

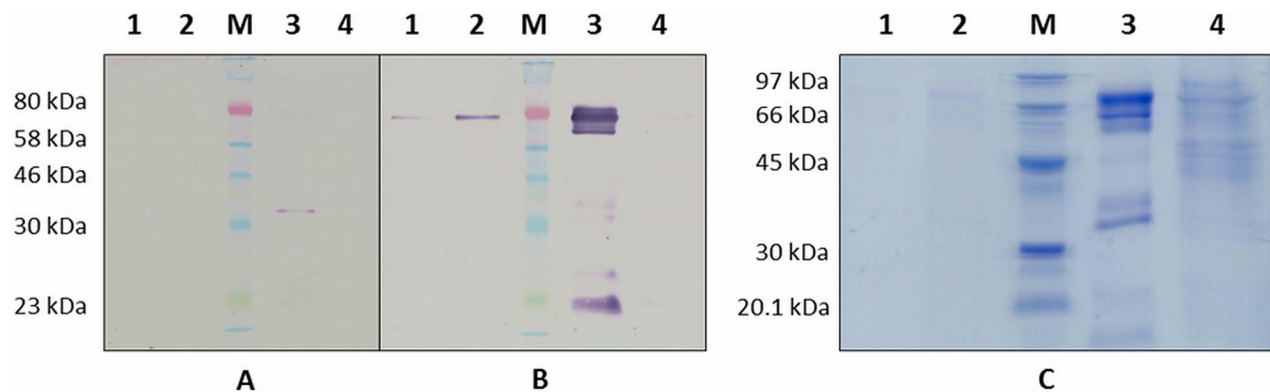
#### Diagnostic potential for antibody detection in sleeping sickness patients

The diagnostic potential of rLiTat 1.3 and rLiTat 1.5 in comparison with their corresponding native antigens was assessed in ELISA with sera from 88 *T. b. gambiense* HAT patients and 74

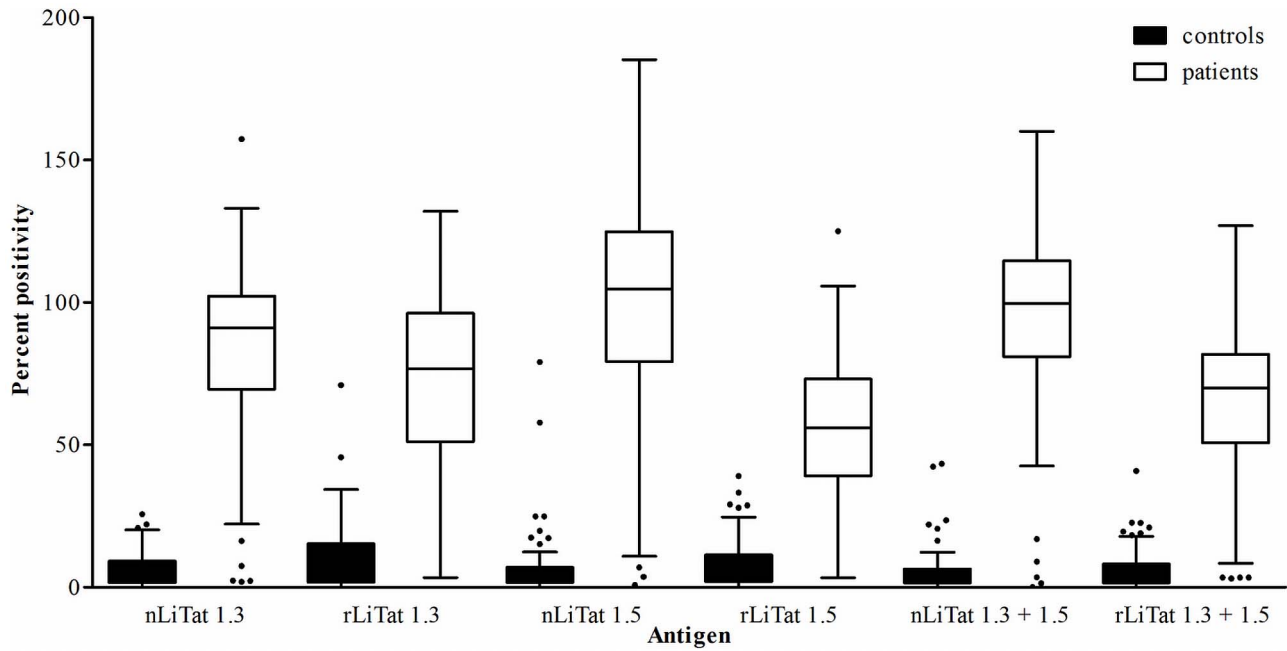
non-HAT controls (Fig. 3 and Table 2). Both the recombinant and the native antigens reacted more strongly with the patient sera (10 to 34 times higher median PP values) than with the control sera. However, for each recombinant the median PP obtained with the patient sera was lower than for the corresponding native antigen with the same sera. A similar pattern was observed with mixtures of the two recombinant and of the two native antigens.

The relationship between diagnostic sensitivity and specificity of the antigens is represented as ROC curves in Figure 4. The area under the curve (AUC) is 0.97 (95% CI 0.948–0.999) for native LiTat 1.3 and 0.95 (95% CI 0.921–0.980) for rLiTat 1.3 and 0.98 (95% CI 0.952–0.999) for native LiTat 1.5 and 0.96 (95% CI 0.928–0.984) for rLiTat 1.5. With the mixture of the two native antigens an AUC of 0.97 (95% CI 0.944–1.000) is obtained while with the mixture of the two recombinant antigens, the AUC of 0.96 is slightly lower (95% CI 0.938–0.990). Pairwise comparison of the AUC for all antigens and their mixtures showed no significant differences ( $p > 0.05$ ).

For the whole range of cut-offs the Youden index was calculated (Youden index = sensitivity + specificity – 1) [43]. For the cut-off PP value with maximal Youden index, the diagnostic sensitivity and specificity for each antigen and the combinations are represented in Table 3. With the individual recombinant antigens, the



**Figure 2. Expression of rLiTat 1.5<sub>H-SUMO-33-426-Strep</sub> by *Pichia pastoris*.** A: Western blot with anti-His tag antibody; B: Western blot with anti-Strep tag antibody; C: Coomassie stained 12% SDS-PAGE gel; Protein markers (M): ColorPlus Prestained Protein Marker (NEB; A and B) and LMW-SDS protein marker (GE Healthcare; C); lane 1: supernatant of transfected *Pichia pastoris* M5 after 25 h induction; lane 2: supernatant of transfected *Pichia pastoris* M5 after 44 h induction; lane 3: Ni-NTA purified recombinant LiTat 1.5; lane 4: 20× concentrated flow-through of Ni-NTA purified supernatant.  
doi:10.1371/journal.pntd.0003006.g002



**Figure 3. Box blots of the percent positivity (PP) obtained in ELISA with respectively native LiTat 1.3 (2 µg/ml), rLiTat 1.3<sub>H-SUMO-24-372-Strep</sub> (4 µg/ml), native LiTat 1.5 (2 µg/ml), rLiTat 1.5<sub>H-SUMO-33-426-Strep</sub> (4 µg/ml) and mixtures of both native (1+1 µg/ml) and recombinant (2+2 µg/ml) antigens tested with sera from 88 *T.b. gambiense* HAT patients and 74 non-HAT controls.**  
doi:10.1371/journal.pntd.0003006.g003

sensitivities are significantly lower than with the corresponding native antigens ( $p=0.0027$  for rLiTat 1.5 and  $p=0.0196$  for rLiTat 1.3). When both antigens are mixed, the sensitivity increases for the recombinant antigens but not for the native antigens and the difference becomes not significant ( $p=0.1025$ ). The specificity of recombinant LiTat 1.3 antigen is significantly lower than for its corresponding native antigen ( $p=0.0455$ ) while the specificities of recombinant LiTat 1.5 and the mixture of rLiTat 1.3 and rLiTat 1.5 are not significantly different from the specificities of the native LiTat 1.5 and the mixture of nLiTat 1.3 and nLiTat 1.5 (respectively  $p=0.5637$  and  $p=0.3171$ ).

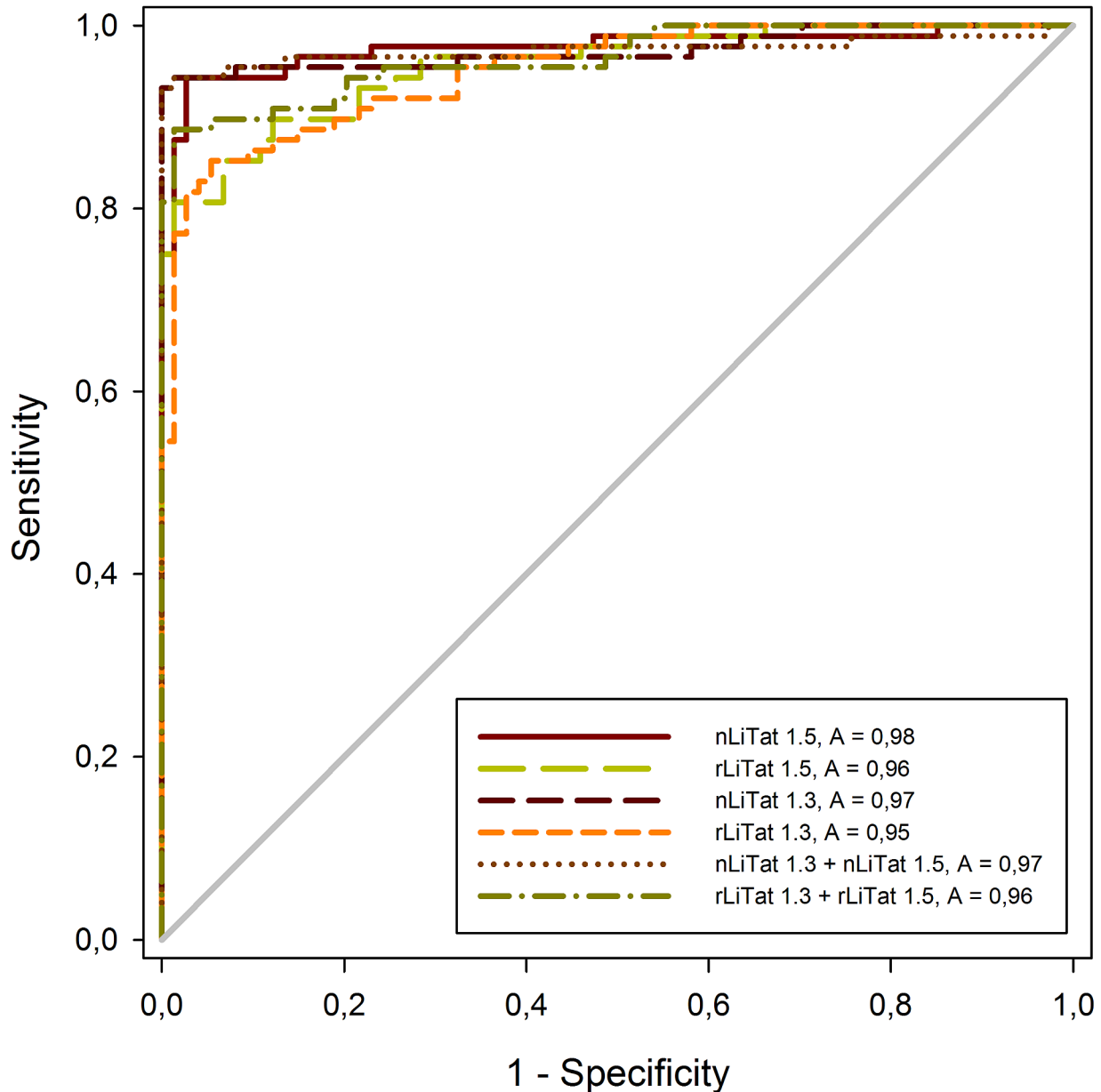
**Discussion**

The variable N-terminal domains of two predominant *T.b. gambiense* VSGs, LiTat 1.3 and LiTat 1.5, were successfully expressed as SUMO fusion proteins by the yeast *Pichia pastoris* and secreted in the culture supernatant. The SUMO part prevents misfolding of its fusion partner and chaperones it through the endoplasmic reticulum [44]. In order to mimic the native antigen structure as much as possible, our recombinants were expressed in the GlycoSwitch M5 strain, ensuring a trypanosome-like Man<sub>5</sub>-GlcNAc<sub>2</sub> N-glycosylation profile.

**Table 2. Median percent positivity (PP) with 25<sup>th</sup> and 75<sup>th</sup> percentile obtained in ELISA with the different antigens and sera from 88 *T.b. gambiense* HAT patients and 74 non-HAT controls.**

	Antigen	Median PP	25 <sup>th</sup> percentile	75 <sup>th</sup> percentile
Patients	nLiTat 1.3	91.0	69.6	102.2
	rLiTat 1.3	76.6	51.1	96.2
	nLiTat 1.5	104.8	79.2	124.9
	rLiTat 1.5	56.1	39.1	73.1
	nLiTat 1.3+1.5	99.6	80.9	114.7
	rLiTat 1.3+1.5	70.5	50.7	81.8
Controls	nLiTat 1.3	4.3	1.7	9.2
	rLiTat 1.3	4.5	1.8	15.2
	nLiTat 1.5	3.5	1.7	6.9
	rLiTat 1.5	5.4	2.0	11.4
	nLiTat 1.3+1.5	2.9	1.6	6.4
	rLiTat 1.3+1.5	3.4	1.5	8.1

doi:10.1371/journal.pntd.0003006.t002



**Figure 4. Receiver operator characteristic (ROC) curves and area under the curve (AUC) constructed from ELISA results obtained with native LiTat 1.3 (2  $\mu\text{g/ml}$ ), rLiTat 1.3<sub>H-SUMO-24-372-Strep</sub> (4  $\mu\text{g/ml}$ ), native LiTat 1.5 (2  $\mu\text{g/ml}$ ), rLiTat 1.5<sub>H-SUMO-33-426-Strep</sub> (4  $\mu\text{g/ml}$ ) and mixtures of both native (1+1  $\mu\text{g/ml}$ ) and recombinant (2+2  $\mu\text{g/ml}$ ) antigens tested with sera from 88 *T.b. gambiense* HAT patients and 74 non-HAT controls.**

doi:10.1371/journal.pntd.0003006.g004

The mature rLiTat 1.3 consists of 457 amino acids with two putative N-glycosylation sites on the expressed variable N-terminal domain of LiTat 1.3 VSG, namely Asn145 and Asn271 or amino acids 45 and 171 of the VSG. The mature rLiTat 1.5 consists of 502 amino acids with no putative N-glycosylation sites (NetNGlyc; ExPASy). However, in the absence of putative N-glycosylation sites in the rLiTat 1.5 fusion protein, O-glycosylation, which also occurs in *Pichia*, might account for its slower migration on SDS-PAGE [45]. As shown in the western blots and in the Coomassie stained gels secretion of the recombinants is accompanied by a certain level of degradation. During the optimisation phase of the expression protocol, we attempted to control degradation of the expressed protein by addition of several protease inhibitor

preparations, however without success (data not shown). Neither did the addition of antifoam to the culture medium inhibit protein degradation although this resulted in a higher production. The combination of supplementation of the culture medium with antifoam and limiting the induction phase to maximum two days at 22°C provided the best means to control degradation of the expressed proteins with yields of up to 10 mg affinity purified recombinant protein per litre cell culture.

Another strategy that still could be attempted to avoid protein degradation, is the identification of the protease-sensitive sites through Edman degradation of the smaller fragments, followed by site-directed mutagenesis to change the identified protease recognition sequences.

**Table 3.** Percent positivity cut-off (max. Youden index) and sensitivity and specificity with 95% confidence intervals of the different antigens tested in ELISA with sera from 88 *T.b. gambiense* HAT patients and 74 non-HAT controls.

Antigen	Cut-off	Sensitivity	95% C.I.	Specificity	95% C.I.
nLiTat 1.3	29.6	93.2*	85.8–97.5	100.0*	95.1–100.0
rLiTat 1.3	30.3	85.2	76.1–91.9	94.69	86.7–98.5
nLiTat 1.5	26.0	94.3*	87.2–98.1	97.3	90.6–99.7
rLiTat 1.5	34.2	80.7	70.9–88.3	98.7	92.7–100.0
nLiTat 1.3+1.5	45.5	93.2	85.8–97.5	100.0	95.1–100.0
rLiTat 1.3+1.5	23.1	88.6	80.1–94.4	98.7	92.7–100.0

\* significant difference between recombinant and native.

doi:10.1371/journal.pntd.0003006.t003

Alternatively, the recombinant antigens could be expressed in *Pichia* strains that are deficient in vacuolar proteases, such as SMD1163, SMD1165 or SMD1168, in order to reduce protein degradation. However, these strains typically exhibit slower growth rates, lower transformation efficiencies and lower viabilities. Moreover, they are not available in the GlycoSwitch format [46].

Purification of the secreted recombinants was limited to a one step affinity purification on Ni-NTA resin. Additional purification via the C-terminal Strep tag II is possible but the diagnostic specificity of the recombinant proteins does not suggest that further purification is necessary. Finally, the SUMO fragment could also be removed from the fusion proteins with SUMO protease 2 but neither the sensitivity nor the specificity of the recombinants seem to be impaired by the presence of the SUMO protein.

The rLiTat 1.3 and rLiTat 1.5 antigens proved their diagnostic potential when compared to the corresponding native antigens in ELISA on sera from 88 HAT patients and 74 non-HAT controls. The slightly lower reactivity of the individual recombinants might be due to the fact they represent only the N-terminal fragments of the native VSGs, thus carrying less epitopes than their native counterparts. Furthermore, incomplete or incorrect dimerisation of the recombinants may impede the formation of certain

diagnostically important conformational epitopes. These antigens are therefore ready to be incorporated in new rapid diagnostic tests. As mentioned in the introduction, new immunochromatographic antibody detection tests have been developed using the native LiTat 1.3 and LiTat 1.5 as antigens. This study proves that the rLiTat 1.3 and rLiTat 1.5, especially in combination, could replace the native antigens in a similar test format. Replacing the native antigens will eliminate infecting and sacrificing laboratory rodents and the inherent manipulation-related infection risk for the laboratory staff that is linked to the production of native antigens. Upscaling production of recombinant antigens, e.g. in biofermentors, is straightforward thus leading to improved standardisation of antigen production and reduced production costs, which on their turn will increase the availability and affordability of the diagnostic tests needed for the elimination of *gambiense* HAT.

### Author Contributions

Conceived and designed the experiments: SR LVN MM AH ABdK NB YG PB. Performed the experiments: SR LVN MM AH ABdK NB. Analyzed the data: SR LVN MM AH ABdK NB YG PB. Contributed reagents/materials/analysis tools: SR YG PB. Contributed to the writing of the manuscript: SR LVN MM AH ABdK NB YG PB.

### References

- Ilemobade AA (2009) Tsetse and trypanosomiasis in Africa: the challenges, the opportunities. *Onderstepoort J Vet Res* 76: 35–40.
- Cordon-Obras C, Berzosa P, Ndong-Mabale N, Bobuakasi L, Buatiche JN, et al. (2009) *Trypanosoma brucei gambiense* in domestic livestock of Kogo and Mbini foci (Equatorial Guinea). *Trop Med Int Health* 14: 535–541.
- Njiokou F, Laveissiere C, Simo G, Nkinin S, Grebaut P, et al. (2006) Wild fauna as a probable animal reservoir for *Trypanosoma brucei gambiense* in Cameroon. *Infect Genet Evol* 6: 147–153.
- Gibson W (2001) Molecular characterization of field isolates of human pathogenic trypanosomes. *Trop Med Int Health* 6: 401–406.
- Hide G, Welburn SC, Tait A, Maudlin I (1994) Epidemiological relationships of *Trypanosoma brucei* stocks from South East Uganda: evidence for different population structures in human infective and non-human infective isolates. *Parasitology* 109: 95–111.
- Noireau F, Paindavoine P, Lemesre JL, Toudic A, Pays E, et al. (1989) The epidemiological importance of the animal reservoir of *Trypanosoma brucei gambiense* in the Congo. 2. Characterization of the *Trypanosoma brucei* complex. *Trop Med Parasitol* 40: 9–11.
- Mehlitz D (1982) Trypanosomes in African wild mammals. In: Baker JR, editors. *Perspectives in Trypanosomiasis Research*. Wiley Research Studies Press. pp.25–35.
- Kennedy PGE (2013) Clinical features, diagnosis, and treatment of human African trypanosomiasis (sleeping sickness). *Lancet Neurol* 12: 186–194.
- Malvy D, Chappuis F (2011) Sleeping sickness. *Clin Microbiol Inf* 17: 986–995.
- World Health Organization (2013) Control and surveillance of human African trypanosomiasis. 984. [http://apps.who.int/iris/bitstream/10665/95732/1/9789241209847\\_eng.pdf](http://apps.who.int/iris/bitstream/10665/95732/1/9789241209847_eng.pdf)
- Deborggraeve S, Büscher P (2010) Molecular diagnostics for sleeping sickness: where's the benefit for the patient? *Lancet Infect Dis* 10: 433–439.
- Chappuis F, Loutan L, Simarro P, Lejon V, Büscher P (2005) Options for the field diagnosis of human African trypanosomiasis. *Clin Microbiol Rev* 18: 133–146.
- Robays J, Bilengue MMC, Van der Stuyft P, Boelaert M (2004) The effectiveness of active population screening and treatment from sleeping sickness control in the Democratic republic of Congo. *Trop Med Int Health* 9: 542–550.
- Lejon V, Boelaert M, Jannin J, Moore A, Büscher P (2003) The challenge of *Trypanosoma brucei gambiense* sleeping sickness diagnosis outside Africa. *Lancet Infect Dis* 3: 804–808.
- Lejon V, Büscher P, Sema NH, Magnus E, Van Meirvenne N (1998) Human African trypanosomiasis: a latex agglutination field test for quantifying IgM in cerebrospinal fluid. *Bull World Health Organ* 76: 553–558.
- Garcia A, Jamonneau V, Magnus E, Laveissiere C, Lejon V, et al. (2000) Follow-up of Card Agglutination Trypanosomiasis Test (CATT) positive but apparently aparasitemic individuals in Côte d'Ivoire: evidence for a complex and heterogeneous population. *Trop Med Int Health* 5: 786–793.
- Büscher P, Mumba Ngoyi D, Kaboré J, Lejon V, Robays J, et al. (2009) Improved models of mini anion exchange centrifugation technique (mAECT) and modified single centrifugation (MSC) for sleeping sickness diagnosis and staging. *PLoS Negl Trop Dis* 3: e471.
- Camara M, Camara O, Ilboudo H, Sakande H, Kaboré J, et al. (2010) Sleeping sickness diagnosis: use of buffy coats improves the sensitivity of the mini anion exchange centrifugation test. *Trop Med Int Health* 15: 796–799.
- Pays E, Vanhamme L, Pérez-Morga D (2004) Antigenic variation in *Trypanosoma brucei*: facts, challenges and mysteries. *Curr Opin Microbiol* 7: 369–374.



20. Rudenko G (2011) African trypanosomes: the genome and adaptations for immune evasion. *Essays Biochem* 51: 47–62.
21. Magnus E, Vervoort I, Van Meirvenne N (1978) A card-agglutination test with stained trypanosomes (C.A.T.T.) for the serological diagnosis of *T.b.gambiense* trypanosomiasis. *Ann Soc Belg Méd Trop* 58: 169–176.
22. Büscher P, Lejon V, Magnus E, Van Meirvenne N (1999) Improved latex agglutination test for detection of antibodies in serum and cerebrospinal fluid of *Trypanosoma brucei gambiense* infected patients. *Acta Trop* 73: 11–20.
23. Lejon V, Büscher P, Magnus E, Moons A, Wouters I, et al. (1998) A semi-quantitative ELISA for detection of *Trypanosoma brucei gambiense* specific antibodies in serum and cerebrospinal fluid of sleeping sickness patients. *Acta Trop* 69: 151–164.
24. Lejon V, Jamonneau V, Solano P, Atchade P, Mumba D, et al. (2006) Detection of trypanosome-specific antibodies in saliva, towards non-invasive serological diagnosis of sleeping sickness. *Trop Med Int Health* 11: 620–627.
25. Büscher P, Gillemann Q, Lejon V (2013) Novel rapid diagnostic test for sleeping sickness. *N Engl J Med* 368: 1069–1070.
26. Büscher P, Mertens P, Leclipteux T, Gillemann Q, Jacquet D, et al. (2014) Sensitivity and specificity of HAT Sero-K-SeT, a rapid diagnostic test for serodiagnosis of sleeping sickness caused by *Trypanosoma brucei gambiense*: a case-control study. *The Lancet Global Health* 2: e359–e363.
27. Lumbala C, Bisser S, Nguertoum E, Flevaud L, Jacquet D, et al. (2013) Development and evaluation of a rapid screening test for sleeping sickness. *Annales Africaines de Médecine* 6, Suppl. 1: 49.
28. Peeling RW, Holmes KK, Mabey D, Rondon A (2006) Rapid tests for sexually transmitted infections (STIs): the way forward. *Sex Transm Dis* 82 Suppl V: v1–v6.
29. Rogé S, Van Reet N, Odiwuor S, Tran T, Schildermans K, et al. (2013) Recombinant expression of trypanosome surface glycoproteins in *Pichia pastoris* for the diagnosis of *Trypanosoma evansi* infection. *Vet Parasitol* 197: 571–579.
30. Mumba Ngoyi D, Lejon V, Pyana P, Boelaert M, Ilunga M, et al. (2010) How to shorten patient follow-up after treatment for *Trypanosoma brucei gambiense* sleeping sickness? *J Infect Dis* 201: 453–463.
31. Vervecken W, Kaigorodov V, Callewaert N, Geysens S, De Vusser K, et al. (2004) In vivo synthesis of mammalian-like, hybrid-type N-glycans in *Pichia pastoris*. *Appl Environ Microbiol* 70: 2639–2646.
32. Daly R, Hearn MT (2005) Expression of heterologous proteins in *Pichia pastoris*: a useful experimental tool in protein engineering and production. *J Mol Recognit* 18: 119–138.
33. Lanham SM, Godfrey DG (1970) Isolation of salivarian trypanosomes from man and other mammals using DEAE-cellulose. *Exp Parasitol* 28: 521–534.
34. Van Nieuwenhove L, Rogé S, Lejon V, Guisez Y, Büscher P (2012) Characterization of *Trypanosoma brucei gambiense* variant surface glycoprotein LiTat 1.5. *Genet Mol Res* 11: 1260–1265.
35. Routledge SJ, Hewitt CJ, Bora N, Bill RM (2011) Antifoam addition to shake flask cultures of recombinant *Pichia pastoris* increases yield. *Microb Cell Fact* 10: 17.
36. Lejon V, Claes F, Verloo D, Maina M, Urakawa T, et al. (2005) Recombinant RoTat 1.2 variable surface glycoprotein for diagnosis of *Trypanosoma evansi* in dromedary camel. *Int J Parasitol* 35: 455–460.
37. Lejon V, Rebeski DE, Ndao M, Baelmans R, Winger E, et al. (2003) Performance of enzyme-linked immunosorbent assays for detection of antibodies against *T. congolense* and *T. vivax* in goats. *Vet Parasitol* 116: 87–95.
38. Levey S, Jennings ER (1950) The use of control charts in the clinical laboratory. *Am J Clin Pathol* 20: 1059–1066.
39. Westgard JO, Barry PL, Hunt MR (1981) A multi-rule Shewhart chart for quality control in clinical chemistry. *Clin Chem* 27: 493–501.
40. Bewick V, Cheek L, Ball J (2004) Statistics review 13: Receiver operating characteristics curves. *Crit Care* 8: 508–512.
41. DeLong ER, DeLong DM, Clarke-Pearson DL (1988) Comparing the areas under two or more correlated receiver operating curves: a non-parametric approach. *Biometrics* 44: 837–845.
42. Segrest JP, Jackson RL (1972) Molecular weight determination of glycoproteins by polyacrylamide gel electrophoresis in sodium dodecyl sulfate. In: Victor G, editors. *Methods in Enzymology. Complex Carbohydrates Part B*. Academic Press. pp.54–63.
43. Youden WJ (1950) An index for rating diagnostic tests. *Cancer* 3: 32–35.
44. Butt TR, Edavettal SC, Hall JP, Mattern MR (2005) SUMO fusion technology for difficult-to-express proteins. *Protein Expr Purif* 43: 1–9.
45. O'Leary JM, Radcliffe CM, Willis AC, Dwek RA, Rudd PM, et al. (2004) Identification and removal of O-linked and non-covalently linked sugars from recombinant protein produced using *Pichia pastoris*. *Protein Expr Purif* 38: 217–227.
46. Lin-Cereghino J, Lin-Cereghino GP (2007) Vectors and strains for expression. *Methods Mol Biol* 389: 11–26.